

MARINE ELEVATOR SERVICE CONTACT INFORMATION

KOREA

HYUNDAI ELEVATOR CO., LTD.
— **HEAD OFFICE**
P.I.C. MR. I. KIM
TEL. +82 10 9433 1424
E-MAIL in.kim@hyundaelevator.com

HYUNDAI ELEVATOR CO., LTD.
— **BUSAN BRANCH**
P.I.C. MR. J.D. NAM & MR. M.H. KIM
TEL. +82 10 7177 0843
+82 10 9336 0029
E-MAIL jongdeok.nam@hyundaelevator.com
myounghwan.kim@hyundaelevator.com

HYUNDAI ELEVATOR CO., LTD.
— **ULSAN BRANCH**
P.I.C. MR. S.J. SHIN
TEL. +82 10 8002 5770
E-MAIL seongjin.shin@hyundaelevator.com

MALAYSIA & SINGAPORE

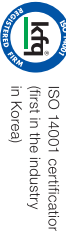
HYUNDAI ELEVATOR SALES & SERVICES
SDN BHD
P.I.C. MR. JEFFREY
TEL. +60 10 258 9015
E-MAIL svcsales@hem.com.my
jeongho.shin@hyundaelevator.com

INDONESIA

PT. HYUNDAI ELEVATOR INDONESIA
P.I.C. MR. S.D. HONG
TEL. +62 21 351 1355
E-MAIL marketing@helin.co.id

TÜRKIYE

HYUNDAI ELEVATOR ASANSÖR VE SERVİS
SAN. VE TİC. A.
P.I.C. MS. BENGI ARTUK
TEL. +90 539 550 33 43
+90 216 510 12 45
E-MAIL bengi.artuk@hdel.com.tr
kb.yum@hyundaelevator.com



HYUNDAI ELEVATOR CO., LTD.

HEAD OFFICE & FACTORY

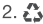
128 Chungjusan-dong-1ro, Chungju-si, Chungcheongbuk-do,
27329 Republic of Korea

SEOUL OFFICE (GLOBAL SERVICE DIVISION)

5~9th Floor, Hyundai Group Building – East, Yulgokro 194,
Jongro-gu, 03127 Republic of Korea

Differences between information in the brochure and the products sold may occur due to discrepancies with the printing date of brochures. Specifications may change due to product quality improvements. Please contact a sales representative to make a purchase.

Notes

1. Copyright © HYUNDAI ELEVATOR CO., LTD. All rights reserved. Printed in Korea.
2.  this printed material can be recycled after separate collection for environmental protection.



Connect to Marine



MAINTENANCE
SOLUTION
for MARINE ELEVATORS


HYUNDAI
ELEVATOR CO., LTD.

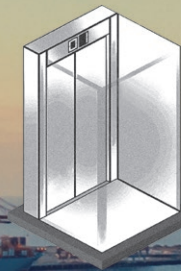
MAINTENANCE AND ROUTINE INSPECTIONS
FOR MARINE ELEVATORS

WHY HYUNDAI ELEVATOR?

A TOTAL MOVING SOLUTIONS PROVIDER

Hyundai Elevator is a transportation equipment supplier that offers comprehensive services ranging from the design of elevators and escalators to their manufacture, installation and maintenance. Founded in 1984, the company has been the market leader in Korea for the past 16 years. It has also been the leader in land-based elevator maintenance in Korea for the past 8 years.

Shipboard elevators need to be safe and reliable for the benefit of crew and pilots. Hyundai Elevator is an elevator manufacturer that provides advanced maintenance services at major ports for the crew's convenience and shipowners' confidence.



GREATER VALUE FOR USERS AND SHIPOWNERS

- Greater safety and comfort.
- Appreciation of the ship's value with the application of advanced technology and availability of comprehensive services.
- * Flag administration requires periodic inspections of ship elevators (6 months, 1 year, 2 years, 5 years, etc. depending on the corresponding flag administration).

REASONS WHY YOU SHOULD CHOOSE HYUNDAI ELEVATOR

No.1



- Ranked 1st in market share in the Korean elevator market for 16 consecutive years (No. 1 in land-based elevator maintenance in Korea for 8 consecutive years)
- Ranked 1st in market share in the global marine elevator market

Global Network



- Quick delivery of maintenance services at major ports around the world through a global service network

Genuine Parts



- Certification and warranty of replacement parts
- Company-wide quality control based on ISO 9001

5 TOTAL MOVING SOLUTION PROVIDER

WHY HYUNDAI ELEVATOR?

Safety, breakdown rates, and satisfaction with repairs vary according to the elevator maintenance company that is used.

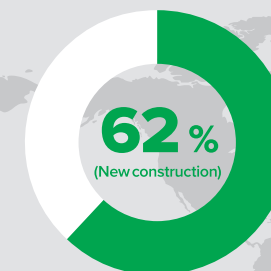
Hyundai Elevator is a comprehensive elevator manufacturer with abundant knowledge, experience, and technology that provides the safest and most reliable maintenance solutions.

It also helps shipowners and users to comply with increasingly stringent elevator safety laws and regulations.

NO. 1 IN THE MARINE ELEVATOR MARKET

Hyundai Elevator is Korea's leading elevator manufacturer that boasts world-class technology and performance. It maintains a worldwide network of skilled technicians to service marine elevators.

MARKET SHARE
62% (as of Dec. 2022)



No.1

HYUNDAI ELEVATOR

ACCUMULATED SERVICE KNOW-HOW

No. 1 Market Share for 8 Years in Korea for Land Elevator Service As of the end of 2022, the number of services being maintained by Hyundai Elevator in Korea domestic service market has recorded a record number of sales, and is still steadily increasing with a market share of 23%.

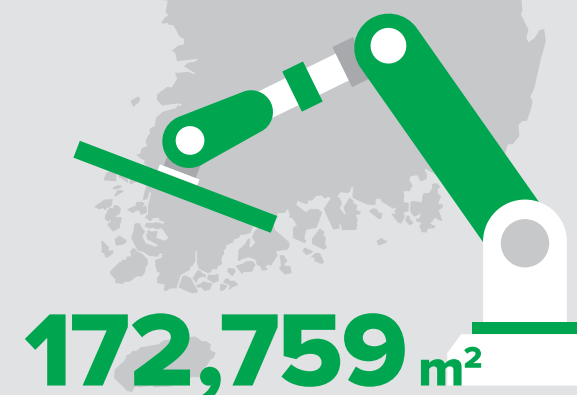
NUMBER OF ELEVATORS SERVICED
Approx. 183,000 (as of Dec. 2022)

Approx.
183K



MADE IN KOREA

Hyundai Elevator's new 172,759 m² factory in Chungju is a state-of-the-art smart factory that is 78% automated and equipped with AI technology.



PRODUCT DEVELOPMENT THROUGH EXHAUSTIVE QUALITY VERIFICATION

Hyundai Elevator thoroughly tests the safety and reliability of its products at its Hyundai Chungju Test Tower. The tower stands 243 m above ground and 15 m underground, replicating the environment of an actual high-rise building.

243 m



GLOBAL SUPPLY CHAIN

Hyundai Elevator’s global network enables it to respond quickly and effectively to service calls at major ports around the world and to use reliable genuine parts.

GLOBAL SERVICE NETWORK

RAPID PARTS SUPPLY SYSTEM

Hyundai Elevator has a global service network of qualified service agents that maintain a stock of essential parts for urgent requests.

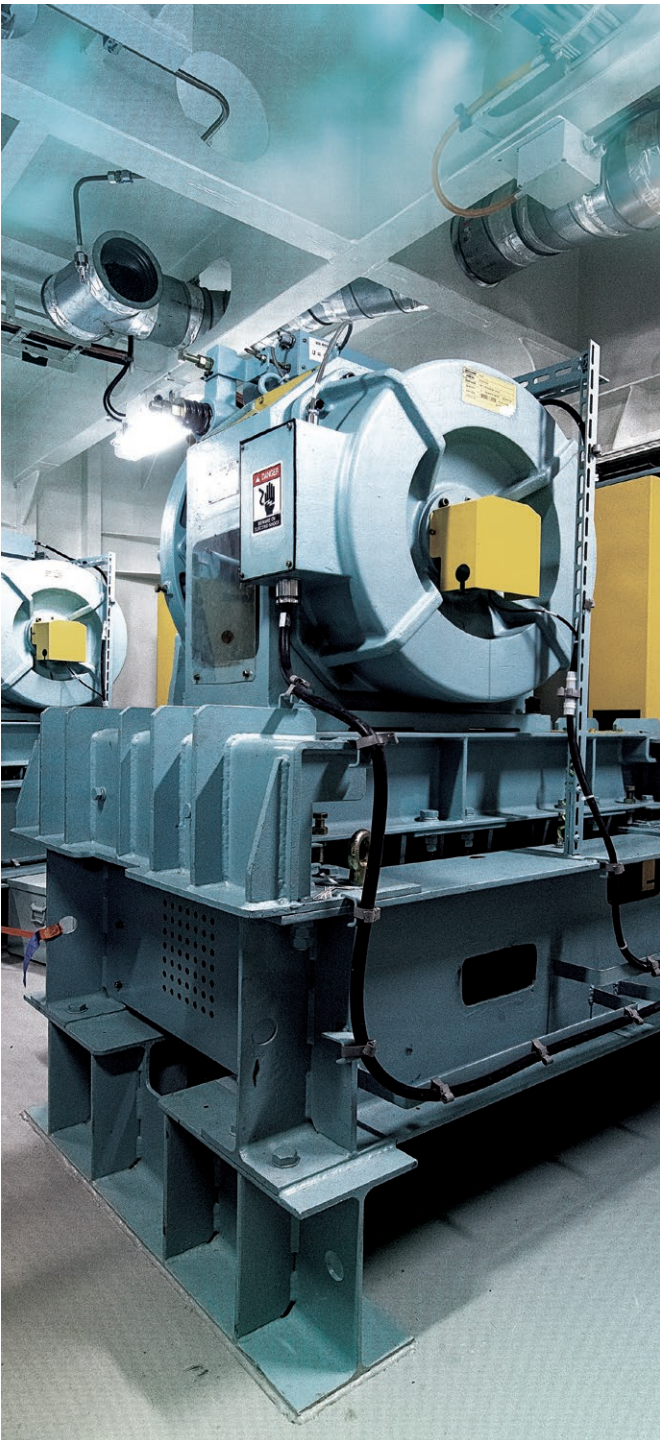
USED PARTS MANAGEMENT

Hyundai Elevator actively manages used parts by collecting and disposing them immediately for customer safety.



22 SERVICE POINTS

RELIABLE GENUINE PARTS AND QUALITY ASSURANCE



Elevators need to have parts continuously replaced due to breakdowns and long-term wear and tear. Hyundai Elevator Maintenance Service uses certified replacement parts and provides warranties in case problems occur.

In addition, Hyundai Elevator is committed to improving components’ safety by operating an ISO 9001 quality management system and complying with relevant regulations across all sectors including development, design, purchasing, production, and service.

QUALITY MANAGEMENT

Hyundai Elevator has established a company-wide quality management system based on ISO 9001 and has implemented it continuously.

RELIABILITY

Hyundai Elevator’s centralized quality control team regularly tests the parts that the company manufactures to ensure reliability. Strict quality controls focusing on accident prevention guarantee that only high quality parts are produced.

DURABILITY

Hyundai Elevator’s manufactured parts undergo rigorous durability tests to ensure that only proven products are used on site.

